

# HOLLY HUNT GREAT OUTDOORS

## FABRIC NUMBER AND NAME

168 / CHILL OUT

## DESCRIPTION

Chill Out is a performance upholstery combining bouclé and chenille yarns for a soft and textural hand. The pale, two-tone color palette offers a variety of scheming options for both indoor and outdoor use.

## CONTENT

66% FR Polyester, 26% Polyester, 8% FR Polyolefin

## WIDTH

55" (140 cm)

## COLORS AVAILABLE

- 01 White Cap
- 02 Quicksand
- 03 Spring Snow
- 04 Bay Blue

## PERFORMANCE CHARACTERISTICS

- Fade-resistant to sunlight
- Chlorine resistant
- Colorfast
- Bleach cleanable
- Mold/mildew resistant
- For use indoors or out

## TESTING INFORMATION

- Passes 50,000 Wyzenbeek Double Rubs
- Passes CAL 117
- Passes NFPA 260
- Passes BS 5852 Source 0 with FR Rated Foam

## WEIGHT

Upholstery

## FREIGHT CODE

C

## CLEANING & CARE

- 100% Solution Dyed fibers are kidproof, dyed-through, easy to clean and don't fade!
- Maintain fabrics by brushing off dirt before it becomes embedded, wipe up spills as soon as they occur or spot clean soon after stains occur.
- Spot clean only with a soft sponge or cloth. Do not use a brush as it may abrade the fibers. The delicate weave and the yarns can break when cleaned with rough bristles.



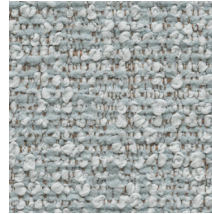
01 WHITE CAP



02 QUICKSAND



03 SPRING SNOW



04 BAY BLUE

