

HOLLY HUNT GREAT PLAINS

FABRIC NUMBER AND NAME

1966 / BEST INTENTIONS

DESCRIPTION

We're going Back to Basics in Great Plains with this revived quality, BEST INTENTIONS, a new staple inspired by a beloved classic. Offered in a wide range of nine colors, this textile can be used for both casual draperies and transitional upholstery.

CONTENT

84% Linen 16% Cotton

WIDTH

55" (140 cm)

COLORS AVAILABLE

- 04 Camel
- 05 Peat Heather
- 06 Foggy
- 07 Abyss

TESTING INFORMATION

- Passes 15,000 Wyzenbeek Double Rubs
- Passes NFPA 260
- Passes BS 5852 Source 0 & 1 with FR rated foam

WEIGHT

Upholstery

FREIGHT CODE

C

CLEANING & CARE

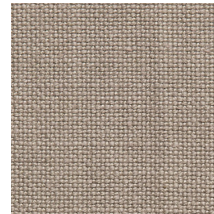
- Maintain fabrics by brushing off dirt before it becomes embedded, wipe up spills as soon as they occur or spot clean soon after stains occur.
- Spot clean only with a soft sponge or cloth. Do not use a brush as it may abrade the fibers. The delicate weave and fine denure of the yarns can break when cleaned with rough bristles.
- For optimal textile performance, maintain fabrics by gently vacuuming dirt before it becomes embedded, wipe or blot spills as soon as they occur, and spot clean soon after stains occur. When spot cleaning, always test a small, inconspicuous part of the furniture in case of discoloration or shrinkage. Avoid excessive brushing that may abrade the fibers.

BACKING RECOMMENDATION

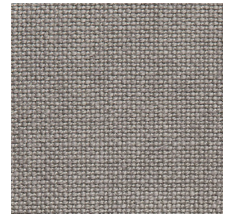
- Knit backing is recommended for use on HOLLY HUNT upholstered product. For all other upholstery, please consult your workroom.



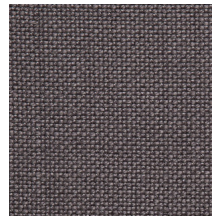
04 CAMEL



05 PEAT HEATHER



06 FOGGY



07 ABYSS

