



CARLISLE & CO.<sup>®</sup>

WALLCOVERINGS

— EST. 1998 —



HANDCRAFTED

# FUSION EDGE

LX1723 SOFT SILVER

|                |                             |
|----------------|-----------------------------|
| WIDTH:         | 36" (91,4 cm) Trimmed       |
| REPEAT:        | None                        |
| BACKING:       | Non-Woven                   |
| FLAME RATING:  | ASTM E84 Class B            |
| BOLT SIZE:     | 8 yd (7,32 m)               |
| MATCH:         | Random Essentially Seamless |
| MINIMUM ORDER: | 8 yd (7,32 m)               |
| MAINTENANCE:   | Soft Dry Brush              |

## MORE COLORS



LX1720  
Porcelain



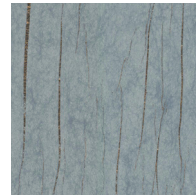
LX1721  
Oatmeal



LX1722  
Sandstone



LX1723  
Soft Silver



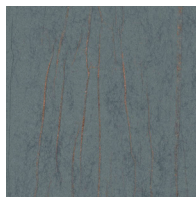
LX1724  
Stone



LX1725  
Taupe



LX1726  
Dove



LX1727  
Cerulean

## TO THE TRADE

### US MARKETS

Exclusively through Holly Hunt

[hollyhunt.com](http://hollyhunt.com)

### INTERNATIONAL MARKETS

800.220.6730

[carlisleco.com](http://carlisleco.com)