

FABRIC NUMBER AND NAME

278 / JOSHUA TREE

DESCRIPTION

A new canvas addition to Great Outdoors, JOSHUA TREE has an extremely soft and substantial hand, making it the perfect pattern for a wide range of applications. This simple basketweave comes in four heathered colorways, all of which are great neutrals, including the dark turq. This pattern pairs well with the textures and large scaled patterns of this collection!

CONTENT

100% Solution Dyed Sunbrella® Yarns

WIDTH

54" (137 cm)

FINISH

Stocked with a stain repellent finish

COLORS AVAILABLE

- 01 Quicksand
- 03 Mountain Side
- 04 Mediterranean

PERFORMANCE CHARACTERISTICS

- Fade-resistant to sunlight
- Chlorine resistant
- Colorfast
- Bleach cleanable
- Mold/mildew resistant
- For use indoors or out

TESTING INFORMATION

- Passes 55,000 Wyzenbeek Double Rubs
- Passes CAL 117
- Passes NFPA 260

WEIGHT

Midweight

FREIGHT CODE

B

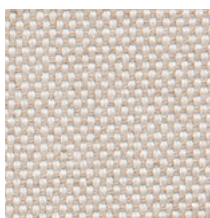
CLEANING & CARE

- Do not Dry Clean
- 100% Solution Dyed fibers are kidproof, dyed-through, easy to clean and don't fade!
- Maintain fabrics by brushing off dirt before it becomes embedded, wipe up spills as soon as they occur or spot clean soon after stains occur.

(Cleaning and care, continued...)

- Spot clean only with a soft sponge or cloth. Do not use a brush as it may abrade the fibers. The delicate weave and fine denure of the yarns can break when cleaned with rough bristles.

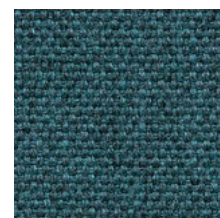
Extensive cleaning instructions available at www.hollyhunt.com.



01 QUICKSAND



03 MOUNTAIN SIDE



04 MEDITERRANEAN

