

# HOLLY HUNT GREAT PLAINS

## FABRIC NUMBER AND NAME

1326 / DONATELLA

## DESCRIPTION

Donatella is the perfect blend of pattern and texture. This contemporary upholstery showcases a mix of yarns with a bouclé accent, giving it an all-over pattern and a beautiful hand.

## CONTENT

31% Cotton 17% Wool 17% Acrylic 15% Mohair  
11% Acetate 9% Nylon

## WIDTH

53.5" (136 cm)

## REPEAT

25 7/8" vertical 17 3/4" horizontal  
(65 1/2 cm vertical 45 cm horizontal)

## COLORS AVAILABLE

- 01 Winter White

## TESTING INFORMATION

- Passes 100,000 Wyzenbeek Double Rubs
- Passes CAL 117
- Passes NFPA 260
- Passes BS 5852 Source 0 & 1 With FR Rated Foam

## WEIGHT

Upholstery

## FREIGHT CODE

D

## CLEANING & CARE

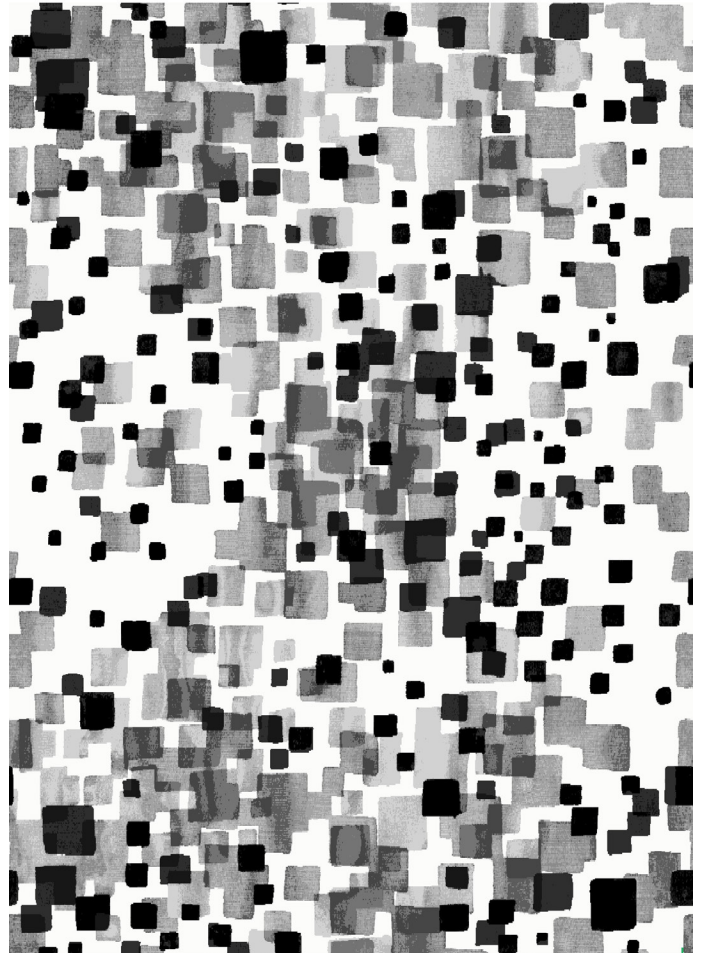
- Dry Clean
- For optimal textile performance, maintain fabrics by gently vacuuming dirt before it becomes embedded, blot spills as soon as they occur, and spot clean soon after stains occur. When spot cleaning, always test a small, inconspicuous part of the furniture in case of furniture discoloration or shrinkage. Avoid excessive brushing that may abrade the fibers.

## BACKING RECOMMENDATION

Knit backing is recommended for use on HOLLY HUNT upholstered product. For all other upholstery, please consult your workroom.



01 WINTER WHITE



FULL REPEAT

