



CARLISLE & CO.®

WALLCOVERINGS

— EST. 1998 —



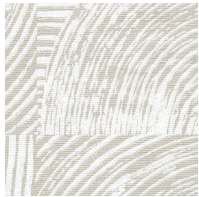
HANDCRAFTED

# IMPRESSION

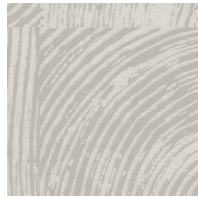
LX1740 PORCELAIN

WIDTH:	27" (68,5 cm) Trimmed
REPEAT:	25¼" (64,13 cm)
BACKING:	Non-Woven
FLAME RATING:	ASTM E84 Class B
BOLT SIZE:	9 yd (8,23 m)
MATCH:	Drop
MINIMUM ORDER:	9 yd (8,23 m)
MAINTENANCE:	Soft Dry Brush

## MORE COLORS



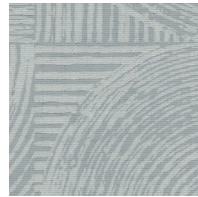
LX1740  
Porcelain



LX1741  
Taupe



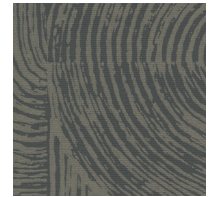
LX1742  
Fog



LX1743  
Stone



LX1744  
Oatmeal



LX1745  
Onyx

## TO THE TRADE

### US MARKETS

Exclusively through Holly Hunt

[hollyhunt.com](http://hollyhunt.com)

### INTERNATIONAL MARKETS

800.220.6730

[carlisleco.com](http://carlisleco.com)