

# JEAN-MICHEL FRANK



## Tables Gigognes 1928

**Structure** | Sycamore

**Finish** | Natural, Grey, Dark or Slate

**Sheen** | Matte or High Gloss

OR

**Structure** | Shagreen

**Finish** | Ivory or Brown

OR

**Structure** | Parchment

**Finish** | Natural

### OVERALL DIMENSIONS (NESTED)

**Width** | 21.6 in 55 cm

**Depth** | 15.7 in 40 cm

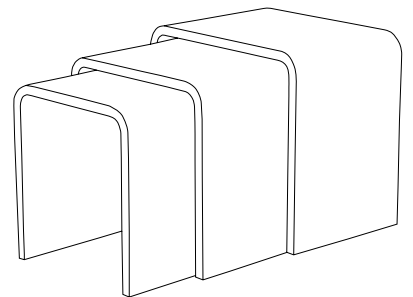
**Height** | 20.7 in 52.5 cm

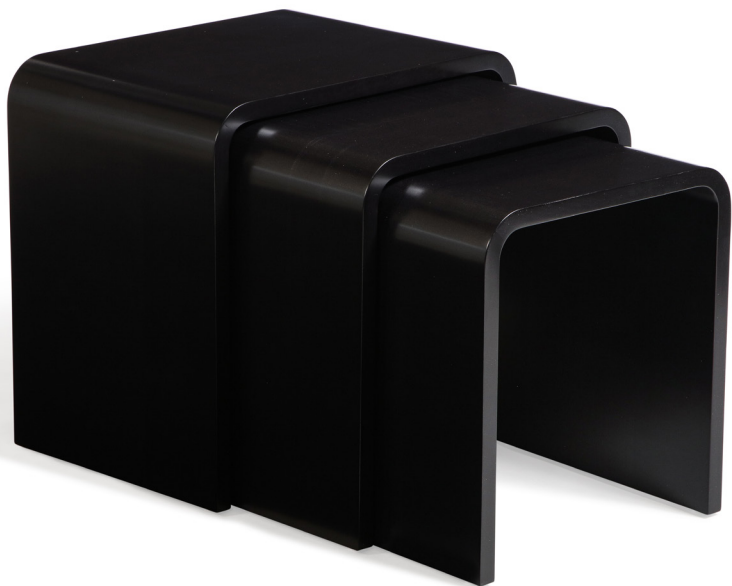
### DETAIL DIMENSIONS (EACH TABLE)

SMALL | 21.6W x 15.7D x 20.6H in (55W x 40D x 52.5H cm)

MEDIUM | 19.4W x 15.7D x 19.5H in (49W x 40D x 50H cm)

LARGE | 16.7W x 15.7D x 18.4H in (42W x 40D x 47.5H cm)





SHOWN ABOVE IN SYCAMORE BLACK (LEFT) AND SYCAMORE NATURAL (RIGHT, AND REVERSE)



SHOWN ABOVE SYCAMORE BROWN FINISH