

HOLLY HUNT GREAT PLAINS

FABRIC NUMBER AND NAME

1141 / BASTILLE

DESCRIPTION

This faceted smooth fabric has a subtle sheen and unique texture. Bastille adds sophistication to any tightly upholstered piece. Passing 100,000 double rubs makes this item great for high traffic settings and hospitality use.

CONTENT

60% Cotton 25% Polyamide 15% Polyester

WIDTH

55" (140 cm)

FINISH

- Stocked with a stain repellent finish
- The stain repellent finish is 100% non-toxic and is not harmful to the user or the environment

COLORS AVAILABLE

- 01 Limestone
- 02 Bronze Night
- 04 Marigold
- 05 La Mer
- 06 Arbor
- 08 Champagne
- 09 Echo
- 10 Celestial

TESTING INFORMATION

- CAL 117: Pass
- NFPA 260: Class I
- Passes 100,000 Wyzenbeek Double Rubs Suitable for residential and contract use
- Passes BS 5852 Source 0 with FR rated foam

WEIGHT

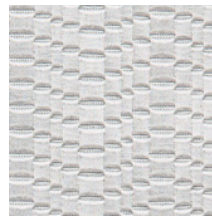
Upholstery

FREIGHT CODE

C

CLEANING & CARE

- Professional dry cleaning with any solvent except trichloroethylene is recommended.
- For optimal textile performance, maintain fabrics by gently vacuuming dirt before it becomes embedded, wipe or blot spills as soon as they occur, and spot clean soon after stains occur. When spot cleaning, always test a small, inconspicuous part of the furniture in case of discoloration or shrinkage. Avoid excessive brushing that may abrade the fibers.



09 ECHO



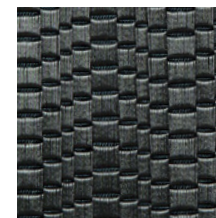
08 CHAMPAGNE



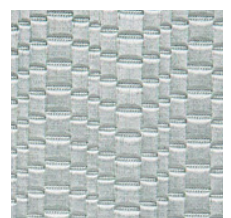
01 LIMESTONE



02 BRONZE NIGHT



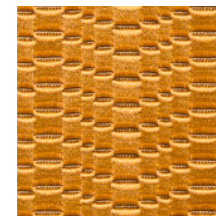
06 ARBOR



10 CELESTIAL



05 LA MER



04 MARIGOLD

