

# HOLLY HUNT GREAT OUTDOORS

---

## FABRIC NUMBER AND NAME

450 / STRAIGHT AWAY

## DESCRIPTION

Straight Away is a double-wide drapery fabric, suitable for both indoor and outdoor use. Featuring a subtle ribbed effect, this light texture adds interest to a space. Offered in an airy color line, pair with a coordinating drapery fabric or hang as a standalone sheer.

## CONTENT

100% Outdoor-Suitable Trevira CS

## WIDTH

130" (330 cm)

## COLORS AVAILABLE

- 01 White Cap
- 02 Seashell
- 03 Perfect Grey

## TESTING INFORMATION

- Passes NFPA 701

## WEIGHT

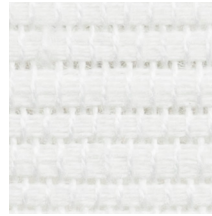
Double Width

## FREIGHT CODE

DW

## CLEANING & CARE

- 100% Solution Dyed fibers are kidproof, dyed-through, easy to clean and don't fade!
- Maintain fabrics by brushing off dirt before it becomes embedded, wipe up spills as soon as they occur or spot clean soon after stains occur.
- Spot clean only with a soft sponge or cloth. Do not use a brush as it may abrade the fibers. The delicate weave and the yarns can break when cleaned with rough bristles.



01 WHITE CAP



02 SEASHELL



03 PERFECT GREY

