

HOLLY HUNT GREAT PLAINS

FABRIC NUMBER AND NAME

3028 / LINEN TICKING

DESCRIPTION

This linen blend has the feel of a French ticking, but with the subtle color palette you always find at HOLLY HUNT. Linen Ticking is a double-wide fabric that is well-suited for use as a roman shade or a sophisticated drapery. The textile's pale stripe can be fabricated as a horizontal stripe off the bolt, or as a vertical stripe when railroaded.

CONTENT

59% Linen 27% Viscose 14% Polyester

WIDTH

130" (330 cm)

REPEAT

Full Width Vertical 1-1/2" Horizontal
(Full Width Vertical 4 cm Horizontal)

FINISH

Double Width

COLORS AVAILABLE

- 01 Bleached
- 02 Half Bleached
- 03 Black & White
- 04 Grey
- 05 Marina

WEIGHT

Double Width

FREIGHT CODE

DW

CLEANING & CARE

- For optimal textile performance, maintain fabrics by gently vacuuming dirt before it becomes embedded, blot spills as soon as they occur, and spot clean soon after stains occur. When spot cleaning, always test a small, inconspicuous part of the furniture in case of furniture discoloration or shrinkage. Avoid excessive brushing that may abrade the fibers.



01 BLEACHED



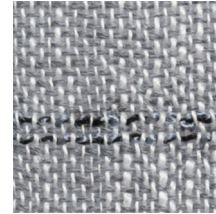
02 HALF BLEACHED



03 BLACK & WHITE



04 GREY



05 MARINA

