

HOLLY HUNT GREAT PLAINS

FABRIC NUMBER AND NAME

4551 / ECRITURE VELVET

DESCRIPTION

Ecriture velvet, inspired by French-designer Christian Astuguevieille's ink paintings, is the showstopper of this collection. Astuguevieille is known for his playful, yet sophisticated line work which has been scaled down to create this distinctive design. This usable cut pile texture adds range to the cut velvet assortment and serves as the perfect center piece or accent for your next project.

CONTENT

Pile: 100% Rayon

Ground: 100% Cotton

WIDTH

54" (137 cm)

REPEAT

7-1/2" Vertical 6-1/2" Horizontal

(19 cm Vertical 16-1/2 cm Horizontal)

COLORS AVAILABLE

- 03 Echo
- 04 Cliffside

TESTING INFORMATION

- Passes 75,000 Wyzenbeek Double Rubs
Suitable for residential and contract use
- FR treat to pass NFPA 260
- Passes BS 5852 Source 0 & 1 with FR rated foam

WEIGHT

Upholstery

FREIGHT CODE

D

CLEANING & CARE

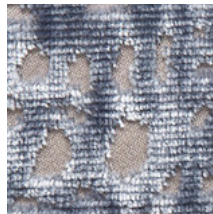
- Professional dry cleaning is recommended.
- For optimal textile performance, maintain fabrics by gently vacuuming dirt before it becomes embedded, wipe or blot spills as soon as they occur, and spot clean soon after stains occur. When spot cleaning, always test a small, inconspicuous part of the furniture in case of discoloration or shrinkage. Avoid excessive brushing that may abrade the fibers.

(cleaning and care, continued...)

- Due to the rayon content, shadowing can occur after normal use when exposed to pressure, heat or humidity. This causes the pile to flatten and reflect light differently. A light steaming can increase the flexibility of the yarns and make them malleable. After steaming, brush the surface to bring the pile back to its original direction. Be careful not to soak the surface of the fabric with the humidity, as viscose requires only a light amount of steam to train the pile back to its upright position.

BACKING RECOMMENDATION

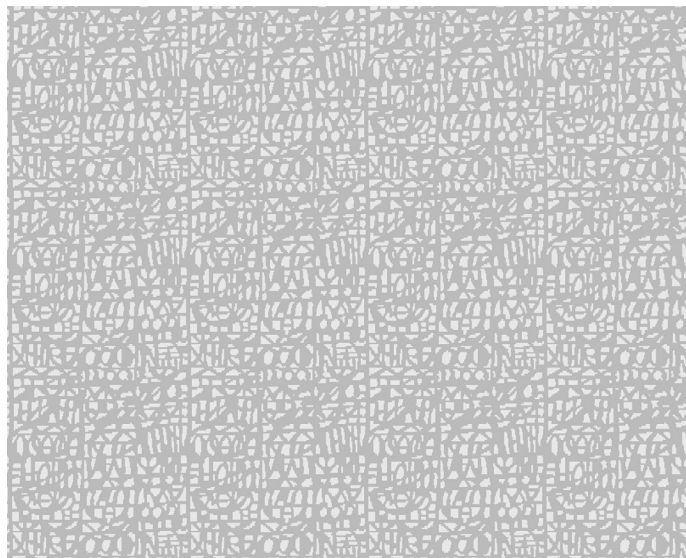
- Knit backing is recommended for use on HOLLY HUNT upholstered product. For all other upholstery, please consult your workroom.



03 ECHO



04 CLIFFSIDE



FULL REPEAT SHOWN

