

Lake Effect/W3011

Description: Woven Textile

Dimensions: 53.9" (137 cm)

Edges: Pretrimmed

Flame Testing: ASTM-E84 Class B

Notes: Stain Repellent Finish

HOLLY HUNT
Walls



W3011/009 CEMENT



FEATURED W3011/012 MIST AND FORTIS NIGHTSTAND

Woven Wonders Collection

Lake Effect/W3011



W3011/007 ALABASTER



W3011/008 OYSTER



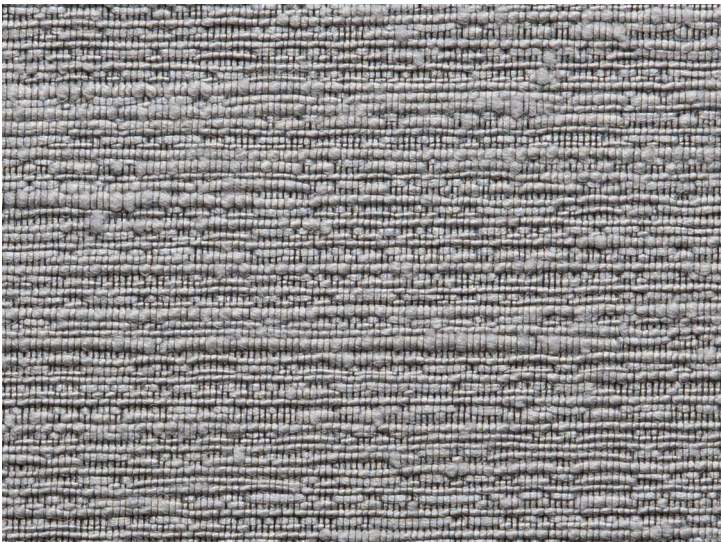
W3011/009 CEMENT



W3011/012 MIST



W3011/011 HARBOR



W3011/010 STORM

SAMPLES AVAILABLE AT YOUR SHOWROOM AND WWW.HOLLYHUNT.COM T 800 320 3145
ALL DESIGNS ARE PROTECTED BY COPYRIGHT AND THE TRADEMARK LAWS OF THE U.S. HOLLY HUNT ENTERPRISES, INC.®

Woven Wonders Collection