

HOLLY HUNT GREAT PLAINS

FABRIC NUMBER AND NAME

1124 / STELLA

DESCRIPTION

Stella is a beautiful weave using vergolina yarns. Vergolinas are yarns wrapped around other fibers and add dimension to the fabric. The sheen and texture gives a unique combination of elegance and durability. Stella is a top selling fabric and great for contract use, as it passes 40,000 double rubs!

CONTENT

54% Cotton 36% Polyester 10% Acrylic

WIDTH

55" (140 cm)

COLORS AVAILABLE

- 01 Opalescence
- 02 White Gold
- 03 Perfection
- 05 Reflecting Pool
- 06 Blackhawk
- 08 Crush
- 09 Silver Pearl

TESTING INFORMATION

- Passes 40,000 Wyzenbeek Double Rubs
- Passes CAL 117
- NFPA 260

WEIGHT

Upholstery

FREIGHT CODE

C

CLEANING & CARE

- Professional dry cleaning with any solvent except trichloroethylene is recommended.
- For optimal textile performance, maintain fabrics by gently vacuuming dirt before it becomes embedded, wipe or blot spills as soon as they occur, and spot clean soon after stains occur. When spot cleaning, always test a small, inconspicuous part of the furniture in case of discoloration or shrinkage. Avoid excessive brushing that may abrade the fibers.

BACKING RECOMMENDATION

- Knit backing is recommended for use on HOLLY HUNT upholstered product. For all other upholstery, please consult your workroom.



01 OPALESCENCE



02 WHITE GOLD



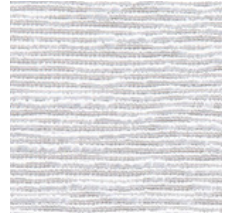
03 PERFECTION



05 REFLECTING
POOL



08 CRUSH



09 SILVER PEARL

