

HOLLY HUNT GREAT PLAINS

FABRIC NUMBER AND NAME

3228 / REFLECTING POOL

DESCRIPTION

Reflecting Pool is sophisticated interpretation of light reflecting on water, a blend of Monet's water lilies and camouflage. The metallic pigment is silk screened by hand on a multicolored velvet ground.

CONTENT

64% Viscose 36% Cotton

WIDTH

56" (142 cm)

REPEAT

50" Vertical 53-1/2" Horizontal
(128 cm Vertical 68 cm Horizontal)

COLORS AVAILABLE

- 01 Wet Sand
- 02 Echo
- 03 Winter Frost
- 04 Purple Rain
- 06 Mediterranean

TESTING INFORMATION

- Passes 30,000 Wyzenbeek Double Rubs
Suitable for residential and contract use
- Passes NFPA 260
- Passes BS 5852 Source 0 with FR rated foam

WEIGHT

Upholstery

FREIGHT CODE

D

CLEANING & CARE

- Professional dry cleaning with any solvent except trichloroethylene is recommended.
- For optimal textile performance, maintain fabrics by gently vacuuming dirt before it becomes embedded, wipe or blot spills as soon as they occur, and spot clean soon after stains occur. When spot cleaning, always test a small, inconspicuous part of the furniture in case of discoloration or shrinkage. Avoid excessive brushing that may abrade the fibers.

(cleaning and care, continued...)

- Due to the viscose content, shadowing can occur after normal use when exposed to pressure, heat or humidity. This causes the pile to flatten and reflect light differently. A light steaming can increase the flexibility of the yarns and make them malleable. After steaming, brush the surface to bring the pile back to its original direction. Be careful not to soak the surface of the fabric with the humidity, as viscose requires only a light amount of steam to train the pile back to its upright position.

BACKING RECOMMENDATION

- Knit backing is recommended for use on HOLLY HUNT upholstered product. For all other upholstery, please consult your workroom.



03 WINTER FROST



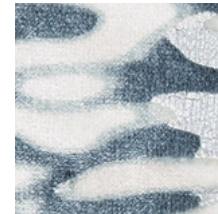
01 WET SAND



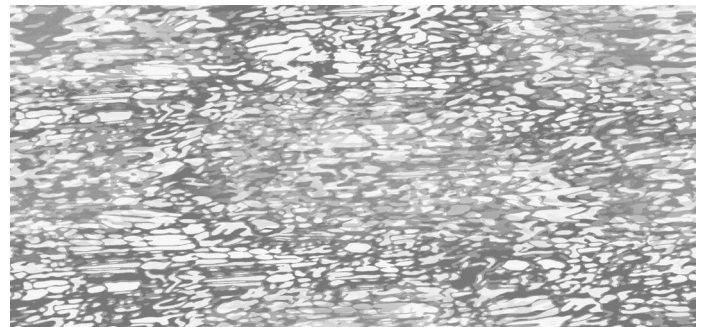
04 PURPLE RAIN



02 ECHO



06 MEDITERRANEAN



FULL REPEAT SHOWN

