

# HOLLY HUNT GREAT PLAINS

## FABRIC NUMBER AND NAME

2653 / FACET

## DESCRIPTION

Facet is a geometric jacquard featuring luxurious boucle and metallic yarns. The all-over abstract pattern is versatile and can be railroaded. Adds a modern twist and a hint of metallic.

## CONTENT

46% Viscose 21% Linen 14% Polyester  
13% Cotton 3% Polyamide 3% Acrylic

## WIDTH

52" (132 cm)

## REPEAT

28-1/2" Vertical 26" Horizontal  
(72 cm Vertical 66 cm Horizontal)

## COLORS AVAILABLE

- 01 Gold
- 02 Pewter

## TESTING INFORMATION

- Passes 100,000 Wyzenbeek Double Rubs
- Passes NFPA 260
- Passes BS 5852 Source 0 & 1 with FR rated foam

## WEIGHT

Upholstery

## FREIGHT CODE

C

## CLEANING & CARE

- Dry clean only.
- For optimal textile performance, maintain fabrics by gently vacuuming dirt before it becomes embedded, wipe or blot spills as soon as they occur, and spot clean soon after stains occur. When spot cleaning, always test a small, inconspicuous part of the furniture in case of discoloration or shrinkage. Avoid excessive brushing that may abrade the fibers.

## BACKING RECOMMENDATION

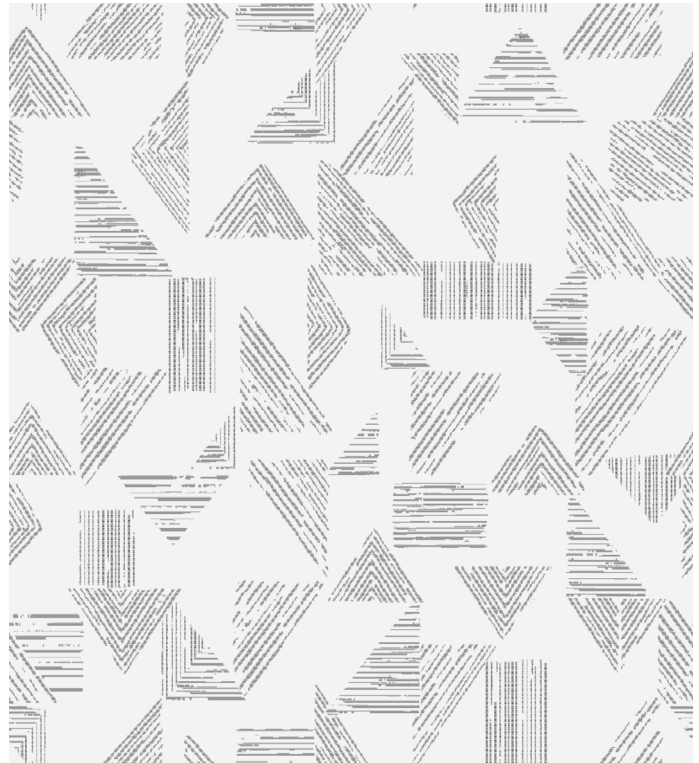
Knit backing is recommended for use on HOLLY HUNT upholstered product. For all other upholstery, please consult your workroom.



01 GOLD



02 PEWTER



REPEAT

