

# HOLLY HUNT GREAT PLAINS

## FABRIC NUMBER AND NAME

1962 / HEAD IN THE CLOUDS

## DESCRIPTION

Head in the Clouds is a luxurious upholstery blend with the look of linen and the hand of wool. Perfect for large-scale upholstery items, this textile is offered in a neutral, heathered color line that sets the foundation for any scheme.

## CONTENT

24% Cotton 23% Polyester 18% Viscose  
9% Wool 9% Linen 9% Nylon 8% Acrylic

## WIDTH

55" (140 cm)

## FINISH

Stocked with a stain repellent finish

## COLORS AVAILABLE

- 01 Heavenly
- 02 Natural
- 03 Snow Melt
- 04 Rocky Shores

## TESTING INFORMATION

- Passes 15,000 Wyzenbeek Double Rubs
- Passes Cal 117
- Passes NFPA 260

## WEIGHT

Upholstery

## FREIGHT CODE

C

## CLEANING & CARE

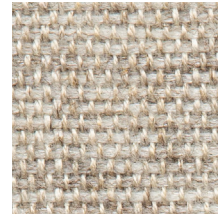
- Dry clean only.
- For optimal textile performance, maintain fabrics by gently vacuuming dirt before it becomes embedded, wipe or blot spills as soon as they occur, and spot clean soon after stains occur. When spot cleaning, always test a small, inconspicuous part of the furniture in case of discoloration or shrinkage. Avoid excessive brushing that may abrade the fibers.

## BACKING RECOMMENDATION

Pre-backed



01 HEAVENLY



02 NATURAL



03 SNOW MELT



04 ROCKY SHORES

