

# HOLLY HUNT GREAT PLAINS

## FABRIC NUMBER AND NAME

4925 / MADEMOISELLE

## DESCRIPTION

Inspired by Coco Chanel's famous tweeds and woven at a luxury mill in Italy, Mademoiselle is packed with special yarns that create a bespoke look with a hint of metallic. The playful hues give this pattern great versatility; it pairs well across the color spectrum. This performance textile is stocked with knit backing and a stain repellent finish.

## CONTENT

42% Viscose 21% Cotton 13% Wool  
13% Acrylic 8% Linen 3% Polyester

## WIDTH

54" (137 cm)

## FINISH

Stocked with a stain repellent finish

## COLORS AVAILABLE

- 01 Autumn
- 02 Saffron
- 03 Multi
- 04 Warm & Cool
- 05 Shadow
- 06 Navy

## TESTING INFORMATION

- Passes 45,000 Wyzenbeek Double Rubs
- Passes BS 5852 Source 0 & 1 with FR rated foam

## WEIGHT

Upholstery

## FREIGHT CODE

C

## CLEANING & CARE

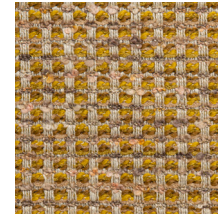
- Dry clean only.
- For optimal textile performance, maintain fabrics by gently vacuuming dirt before it becomes embedded, wipe or blot spills as soon as they occur, and spot clean soon after stains occur. When spot cleaning, always test a small, inconspicuous part of the furniture in case of discoloration or shrinkage. Avoid excessive brushing that may abrade the fibers.

## BACKING RECOMMENDATION

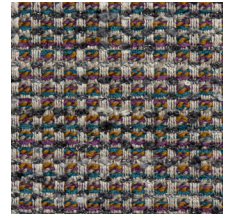
Pre-backed



01 AUTUMN



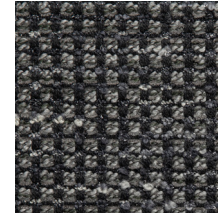
02 SAFFRON



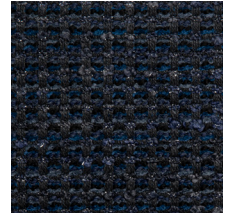
03 MULTI



04 WARM & COOL



05 SHADOW



06 NAVY



Performance Textile