

HOLLY HUNT GREAT PLAINS

FABRIC NUMBER AND NAME

1977 / IMPRESSIONIST

DESCRIPTION

Impressionist is easy to scheme with its beautiful, multi-tonal, abstract texture. Offered in a diverse color line, each colorway has many tones, creating a versatile upholstery. Stocked with a stain repellent finish.

CONTENT

43% Viscose 21% Cotton 14% Polyester 11% Linen
6% Wool 3% Alpaca 2% Polyamide

WIDTH

55" (140 cm)

FINISH

Stocked with a stain repellent finish

COLORS AVAILABLE

- 01 Greige
- 02 Warm & Cool
- 03 Silver Heather
- 04 Graphite
- 05 Multi

TESTING INFORMATION

- Passes 30,000 Wyzenbeek Double Rubs

WEIGHT

Upholstery

FREIGHT CODE

C

CLEANING & CARE

- Dry clean only.
- For optimal textile performance, maintain fabrics by gently vacuuming dirt before it becomes embedded, wipe or blot spills as soon as they occur, and spot clean soon after stains occur. When spot cleaning, always test a small, inconspicuous part of the furniture in case of discoloration or shrinkage. Avoid excessive brushing that may abrade the fibers.

BACKING RECOMMENDATION

Knit backing is recommended for use on HOLLY HUNT upholstered product. For all other upholstery, please consult your workroom.



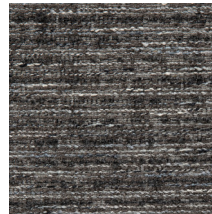
01 GREIGE



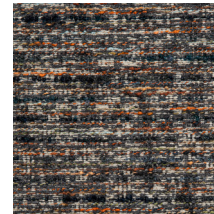
02 WARM & COOL



03 SILVER HEATHER



04 GRAPHITE



05 MULTI



Performance Textile