

HOLLY HUNT GREAT PLAINS

FABRIC NUMBER AND NAME

2850 / WANDERLUST

DESCRIPTION

A Trevira double width midweight sheer, Wanderlust, is a new large scale bohemian pattern. Perfect for contract installations as it passes both US and UK drapery flammability codes.

CONTENT

100% Trevira

WIDTH

130" (330 cm)
DOUBLE WIDTH

REPEAT

52-2/5" Vertical 61-4/5" Horizontal
(133 cm Vertical 157 cm Horizontal)

COLORS AVAILABLE

- 01 Golden Light
- 02 Winter Haze
- 03 Fresh Start
- 04 Nightfall

TESTING INFORMATION

- Passes NFPA 701
- Passes BS 5867-2 Type B

WEIGHT

Midweight

FREIGHT CODE

DW

CLEANING & CARE

- Professional dry cleaning with any solvent except trichloroethylene is recommended.
- For optimal textile performance, maintain fabrics by gently vacuuming dirt before it becomes embedded, wipe or blot spills as soon as they occur, and spot clean soon after stains occur. When spot cleaning, always test a small, inconspicuous part of the furniture in case of discoloration or shrinkage. Avoid excessive brushing that may abrade the fibers.
- As necessary, steaming may be done from back of fabric in downward strokes. Always test a small corner of the fabric first. Keep a few inches of distance between the steamer and the fabric, and do not steam in one place of a fabric for too long.



01 GOLDEN LIGHT



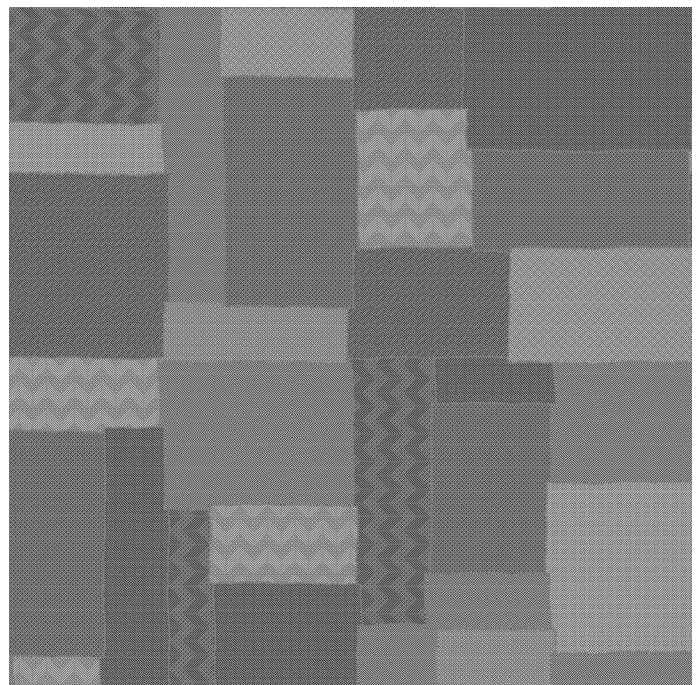
02 WINTER HAZE



03 FRESH START



04 NIGHTFALL



FULL REPEAT SHOWN

