

## FABRIC NUMBER AND NAME

274 / PARKER SHEER

## DESCRIPTION

Parker Sheer is a beautiful new outdoor sheer, featuring a broken grid pattern, which imitates embroidery. Launching in three cool colorways, this pattern adds soft dimension to all spaces with just enough light coverage. With its light hand, and easy drape, we look forward to seeing this installed!

## CONTENT

100% Sunbrella® Acrylic

## WIDTH

59" (150 cm)

## FINISH

Stocked with a stain repellent finish

## COLORS AVAILABLE

- 02 Rock Salt
- 03 True Grey

## WEIGHT

Window

## FREIGHT CODE

A

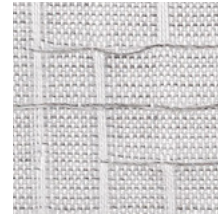
## CLEANING & CARE

- Do not Dry Clean
- 100% Solution Dyed fibers are kidproof, dyed-through, easy to clean and don't fade!
- Maintain fabrics by brushing off dirt before it becomes embedded, wipe up spills as soon as they occur or spot clean soon after stains occur.
- Spot clean only with a soft sponge or cloth. Do not use a brush as it may abrade the fibers. The delicate weave and fine denure of the yarns can break when cleaned with rough bristles.

Extensive cleaning instructions available at [www.hollyhunt.com](http://www.hollyhunt.com).



02 ROCK SALT



03 TRUE GREY

