

Echo/W6026

Description: Acoustical Trevira
with Textural Resin

Dimensions: 37.4" (95 cm)

Edges: Pretrimmed

Repeat: 25.2" V x 37.4" H
(64 cm V x 95 cm H)

Flame Testing: ASTM-E84 Class A

Product Care: Washable

Notes: Sound Absorption

HOLLY HUNT Walls



W6026/003 STRAW



W6026/007 FOG, W6026/006 CEMENT, W6026/008 SAGE, W6026/009 SMOKE

Performance Collection



W6026/001 PEARL



W6026/002 IVORY



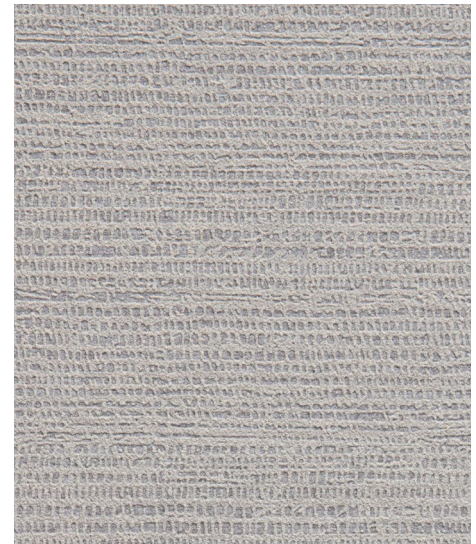
W6026/003 STRAW



W6026/004 OATMEAL



W6026/005 MINK



W6026/006 CEMENT



W6026/007 FOG



W6026/008 SAGE



W6026/009 SMOKE