

Tied Up/W5019

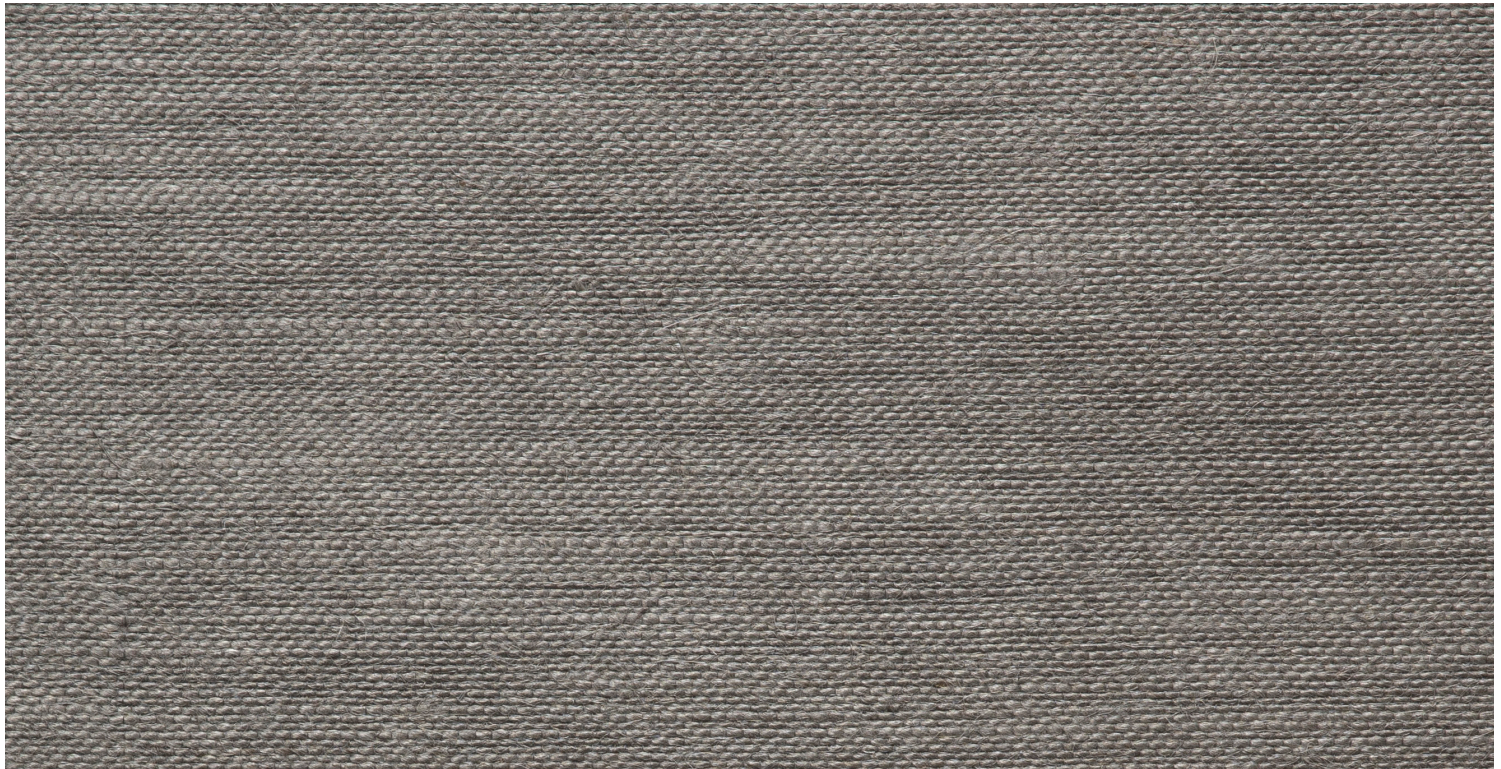
Description: Sisal Weave

Dimensions: 36" w x 8 yd
(91.4 cm x 7.3 m)

Edges: Pretrimmed

Flame Testing: ASTM-E84 Class A

HOLLY HUNT
Walls



W5019/108 SMOKE



FEATURED W5019/109 LAKE AND CHRISTIAN ASTUGUEVIEILLE LOUXTER CHEST

Naturally Collection

Tied Up/W5019



W5019/103 SAND



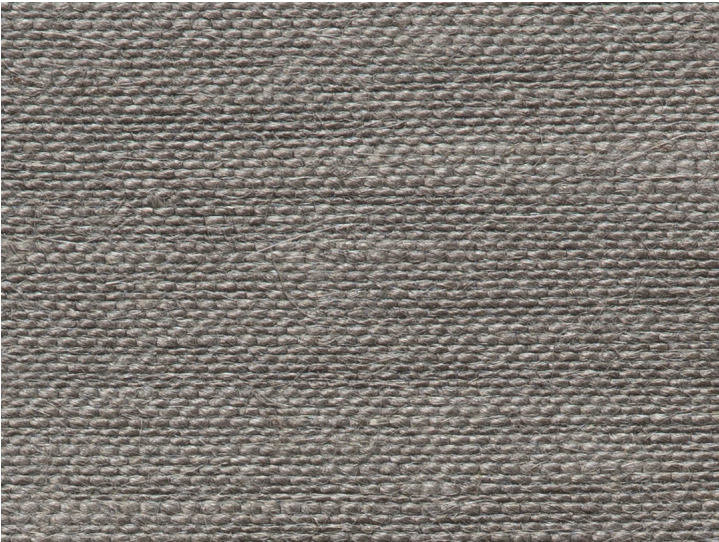
W5019/106 LINEN



W5019/105 CEMENT



W5019/109 LAKE



W5019/108 SMOKE



W5019/112 MIDNIGHT