

# HOLLY HUNT GREAT OUTDOORS

## FABRIC NUMBER AND NAME

185 / GETA

## DESCRIPTION

Inspired by a new “shoelace” yarn, Geta was developed exclusively for HOLLY HUNT. Expanding upon our casement weaves that provide privacy and light control, this quality is perfect for clients who love Perfect Catch or Network. Ideal for windows that receive constant sunlight because this quality is woven in solution dyed acrylic so it will not fade.

## CONTENT

100% Solution Dyed Acrylic

## WIDTH

45" (114 cm)

## COLORS AVAILABLE

- 01 White Cap
- 02 Spring Snow
- 03 Desert
- 04 Shale

## WEIGHT

Single Width

## FREIGHT CODE

A

## CLEANING & CARE

- 100% Solution Dyed fibers are kidproof, dyed-through, easy to clean and don't fade!
- Maintain fabrics by brushing off dirt before it becomes embedded, wipe up spills as soon as they occur or spot clean soon after stains occur.
- Spot clean only with a soft sponge or cloth. Do not use a brush as it may abrade the fibers. The delicate weave and fine denure of the yarns can break when cleaned with rough bristles.

Extensive cleaning instructions available at [www.hollyhunt.com](http://www.hollyhunt.com).



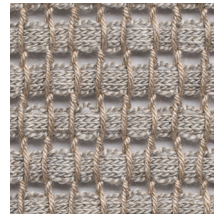
01 WHITE CAP



02 SPRING SNOW



03 DESERT



04 SHALE

