

HOLLY HUNT GREAT PLAINS

FABRIC NUMBER AND NAME

3244 / NAMI

DESCRIPTION

Nami is a showstopper, featuring a large-scale wave pattern derived from the famous Japanese block print, "The Wave". Hand silkscreened and foiled by artisans in Italy, this velvet is as luxurious as it is unique. Offered in neutral colorways that pull from our best-selling colors in Great Plains and Beyond Borders, this pattern can pull together any room.

CONTENT

64% Viscose 36% Cotton

WIDTH

54" (137 cm)

REPEAT

36" Vertical 54" Horizontal
(91.5 cm Vertical 137 cm Horizontal)

COLORS AVAILABLE

- 01 Bronze Night
- 02 Burnished
- 03 Marina

TESTING INFORMATION

- Passes 55,000 Wyzenbeek Double Rubs
- FR treat to pass CAL 117
- Passes NFPA 260

WEIGHT

Upholstery

FREIGHT CODE

D

CLEANING & CARE

- For optimal textile performance, maintain fabrics by gently vacuuming dirt before it becomes embedded, wipe or blot spills as soon as they occur, and spot clean soon after stains occur. When spot cleaning, always test a small, inconspicuous part of the furniture in case of furniture discoloration or shrinkage. Avoid excessive brushing that may abrade the fibers.

BACKING RECOMMENDATION

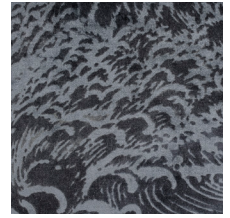
- Knit backing is recommended for use on HOLLY HUNT upholstered product. For all other upholstery, please consult your workroom.



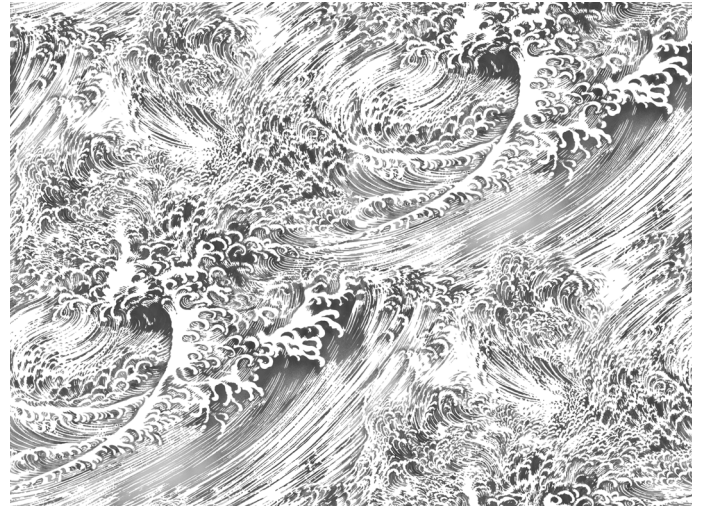
01 BRONZE NIGHT



02 BURNISHED



03 MARINA



FULL REPEAT

