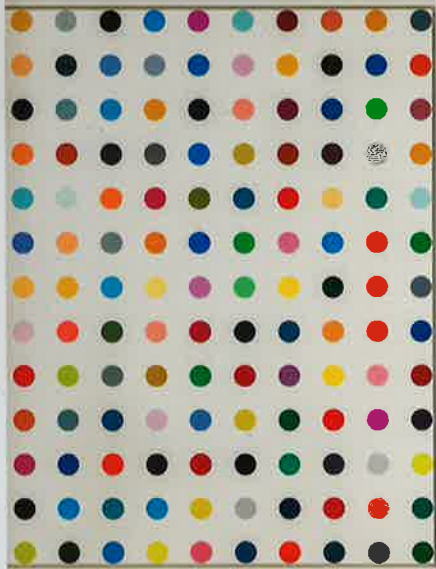


# INTERIORS<sup>®</sup>



ART IN DESIGN





A hall flanked by a guest room and the powder room leads to a central stair that leads up to the master suite, which houses a gym, wine cabinet, bedroom, bath and private terrace. The master bath is almost the same size as the bedroom, and its deep tub from Waterworks evokes a spa-like sanctuary feel. Switch glass fronting the tub takes it from transparent to opaque in a flash. Overhead, the glass skylight roof retracts and "acts as a solarium," Wilson says. Underfoot, three types of Zeolla marble make up the floor, which Wilson says "was inspired by a Mondrian painting." Here, as throughout, every line and angle aligns with another by design. "Darrell's training as an architect ensures that everything is laid out so that all the lines are perfect," Weaver says. "Every single little detail is covered. Not everybody notices it, but it's important that that's how things get laid out." As in the bath, the ocean is the star of the bedroom, where a modern wood canopy bed from Holly Hunt rests on a rug from Illulian, its stripes mirroring the natural lines of the sand and ocean outside. Soft fabric from Glant covers a pair of nesting benches custom designed for the couple's three dogs so they can easily hop up on the bed.

Continuing spatial planes was integral to maximizing space in this modest footprint. Hardwood floors that recall a streamline moderne ship's deck span from the main room out to the oceanside deck, where furniture designed by Richard Schultz picks up the silver of the Marmol Radziner panels that wrap around the house. The Schultz furniture is an apt choice: he designed it specifically for Florence Knoll in 1966 after she requested pieces that would not rust for her seaside Florida home. The hardy materials of the table are offset by elegant Tiffany wine glasses that the couple brings out for their guests who sit and watch the waves lapping at the shore. The house is still very much a classic Malibu beachside bungalow, with a nod to the past and a modern eye to the future. "They come home and this is their refuge," Weaver says. "They close the door behind them and they have this. Nature is very healing."

■ Mark Weaver & Associates, [markweaver.com](http://markweaver.com)







Tucked into a modern alcove framed by board-formed concrete, the adjacent dining room entices with two sculptural chandeliers by Gabriel Scott in smoked glass that gently hover over an aluminum table with a bronze finish. Hohla juxtaposed the hard surface of the table with chairs upholstered in a houndstooth. For an added sense of intimacy, Hohla played off the cedar ceiling and window frame by painting the walls in a charcoal aptly called Eclipse. "The dining room is a little jewel box," Hohla says.

At seven feet long, an overscale light fixture by Bec Brittain surprises in the kitchen. "The light fixture has some whimsy to it," Hohla says. "It's like a dangling sculpture in the middle of the room." It also serves to counterbalance the house's clean architecture and the straight lines of the Bulthaup cabinetry. The designer chose a live-edge walnut countertop and navy leather bar stools by Ochre to bring warmth into a room of mostly hard surfaces.

One of the clients' most used spaces is the cocktail room, with a wraparound glass window and bar. A graphic hair on hide rug by Kyle Bunling and a sofa from Holly Hunt detailed in modern channeling and upholstered in wool play host to homeowners and guests alike recovering from a day of skiing. "It's the room where adults can decompress and get a cocktail and relax before dinner," Makoid says. Hohla provided plenty of seating options that include a window bench, a pair of vintage chairs in a nubby boucle and a wood frame chair with brass detailing by Usona. Carrara marble cocktail tables are more than ready to handle drinks thrown their way.

In the master bedroom, Hohla employed a light silvery palette with steely blues, starting with a leather-frame bed from Holly Hunt with a woven wool headboard. "It was the first piece chosen for the room and really anchored it," she says. The headboard is inset into an oak niche and flanked by floating custom steel side tables with oak detail. Gabriel Scott pendants in emerald green add a dash of color to the room. Hohla pulled the color into pillow shams and even the strié rug from Tai Ping. "The green in there is very subtle," she says. "It's a super cozy rug." The brilliant hue repeats in a powerful punch on a pair of wood-framed lounge chairs by Luca Nicheito for De La Espada. Though most windows throughout the house do not have window treatments, the master bedroom is dressed in solid steely blue-draped panels by Holland & Sherry. "We tried to push for drapery here and there where we could," Hohla says.

A sea of oak—courtesy of the Ash Vein limestone slab on the wall—bathes the master bathroom, with a herringbone floor chevron tile in Ash Vein from Artistic Tile underfoot. A pretty little cedar stool by Usona sits patiently by the tub, but missing is a chandelier. Says Hohla: "The windows with the deep wood sills that the architect designed act as picture frames to the views outside. We wanted to leave the space open so that your focus is on the outdoor vistas." ■ Blaze Makoid, [blazemakoid-architecture.com](http://blazemakoid-architecture.com); Kelly Hohla, [kellyhohlainteriors.com](http://kellyhohlainteriors.com)

